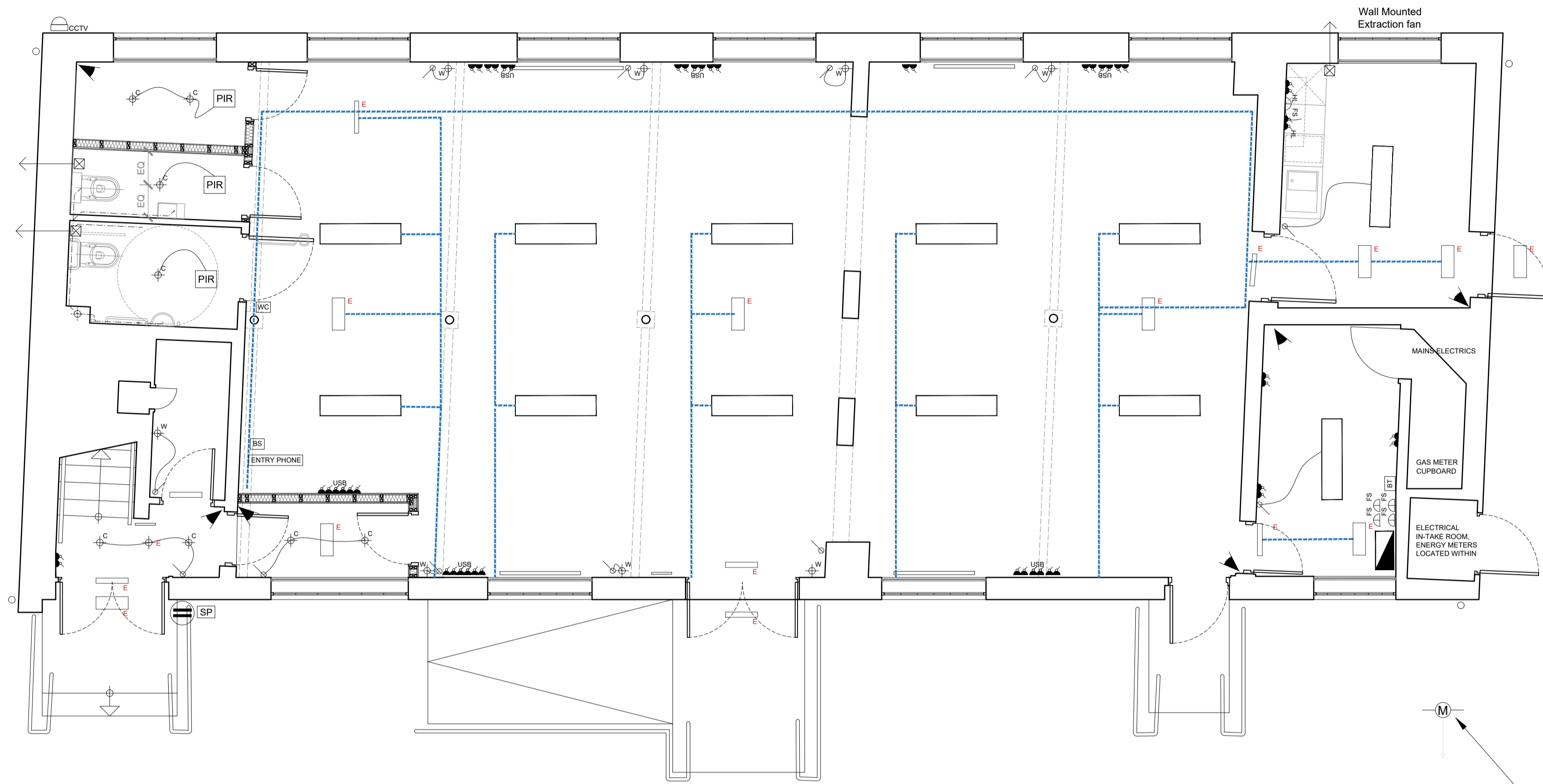


REV	REVISION DETAILS	DATE	DRW	CHK
T1	TENDER MANAGEMENT NOVATED TO KAA	---20	KAA	



Electrical	
	Ceiling light
	Emergency lighting
	Wall mounted light
	Ceiling mounted LED lamp
	Ceiling mounted LED lamp
	Ceiling mounted LED lamp
	PIR sensor
	Light switch
	2 Way light switch
	Highlevel double power socket
	Double power socket
	Double power socket with USB
	Fused spur
	Telephone point
	Extraction fan
	Electrical trunking
	Distribution board
	Contact Board
	Security panel
	CCTV
	Burgler alarm sounder
	Intruder motion sensor
	Accessible WC alert sounder
	Burgler alarm panel
	Entry Phone

WATER METER LOCATED ON MAIN FOOTPATH, NEAR ENTRANCE BOLLARDS (REF 265-W-10 PROPOSED SITE LAYOUT)

1 GROUND FLOOR M + E PLAN
1:50

AS-BUILT DRAWING

PROJECT: THE MALTINGS
PROJECT ADDRESS: THE MALTINGS, BEAR WHARF, READING, RG1 6BT
CLIENT: MACNIVEN QUAYS LTD
PROJECT NUMBER: 0074

DRAWING NAME: GROUND FLOOR M + E PLAN
ISSUE TYPE: AS BUILT

DRAWING NUMBER: 265-W-70

SCALE: 1 : 50
APPROVED BY: MARENGO PROJECTS

FIRST ISSUE DATE:
DRAWN BY: KAA

General Notes
Do not scale from drawings. All dimensions must be checked on site and discrepancies verified with the Architect prior to construction. Unless shown otherwise all dimensions are to be structural surfaces and are in mm.
Unless shown refer to internal door schedule for door sizes.
Door openings to be set out to give full specified architrave either side.
To be read in conjunction with all relevant Architects', Services and Structural Engineers' drawings.
For all structural details and information refer to Structural Engineers drawings.
For all mechanical and electrical information refer to M&E consultants drawings and information unless shown otherwise.
Any discrepancies between drawings to be reported immediately to the architect as once built on site responsibilities are therefore withdrawn. Refer to drawing number for details and correspondence.

MARENGO
PROJECTS
13 The Avenue
Ealing
London
W13 8JR
+44 (0) 845 489 0629
hello@marengoprojects.com