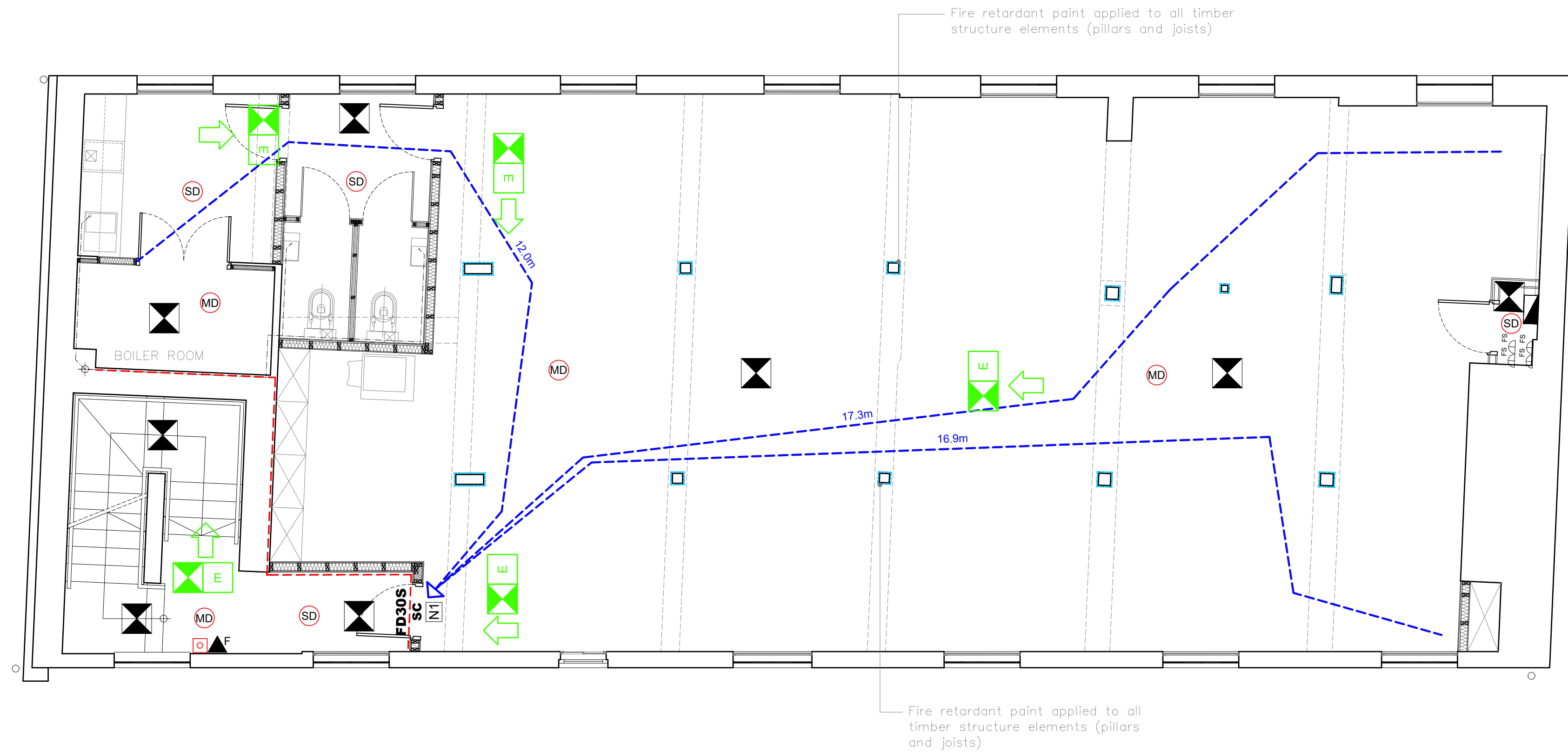


REV	REVISION DETAILS	DATE	DRW	CHK
T1	TENDER MANAGEMENT NOVATED TO KAA	---	20	KA



1 FIRST FLOOR FIRE STRATEGY
1:50

- KEY:**
- FAP FIRE ALARM MAIN PANEL
 - FAPR FIRE ALARM REPEATER PANEL
 - SD SMOKE DETECTOR
 - MD MULTI-FUNCTION DETECTOR WITH SOUNDER BASE
 - HD HEAT DETECTOR
 - (SD) SMOKE DETECTOR C/W SOUNDER BASE & XENON BEACON
 - L FIRE ALARM STAND ALONE BELL
 - FIRE ALARM MANUAL CALL POINT (BREAK GLASS)
 - X EMERGENCY LIGHTING (INTERNAL/EXTERNAL)
 - E FIRE EXIT DIRECTION
 - E ILLUMINATED FIRE EXIT SIGN
 - ▲ SPECIAL FIRE HAZARD - NUMBER AND LIST EACH HAZARD TYPE (EG. GAS, CHEMICAL, ETC.)
 - FIRE RESISTING CONSTRUCTION 30 MIN minimum
 - ESCAPE ROUTE
 - INTUMESCENT PAINT TO BE APPLIED TO ALL EXPOSED STRUCTURE ELEMENTS (steel and timber columns, trusses, underside of timber joists)
 - ➔ EXTERNAL ESCAPE ROUTE
 - FD30S** 30 MIN FIRE RESISTING DOOR WITH INTUMESCENT & SMOKE SEALS
 - FD60S** 60 MIN FIRE RESISTING DOOR WITH INTUMESCENT & SMOKE SEALS
 - FRG** FIRE RESISTING GLAZING
 - N1 FIRE DOOR KEEP SHUT
 - N2 FIRE DOOR KEEP LOCKED
 - N3 AUTOMATIC FIRE DOOR KEEP CLEAR
 - PB** PUSH BAR DOOR IRONMONGERY
 - PP** PANIC PAD DOOR IRONMONGERY
 - SC** SELF CLOSER
 - ▲ CO2 FIRE EXTINGUISHER CO2 TO BS 5306 (2KG unless noted otherwise)
 - ▲ F FIRE EXTINGUISHER FOAM (6L unless noted otherwise)
 - ▲ B FIRE BLANKET
 - ASSEMBLY POINT

NOTE : THE COMPLETED FIRE STRATEGY DRAWING MUST BE PASSED TO THE END USER BEFORE PROJECT COMPLETION FOR DEVELOPMENT OF THEIR BUILDING FIRE MANAGEMENT PLAN FOR COMPLIANCE WITH THE FIRE SAFETY ORDER.

FIRE ALARM SYSTEM, SIGNAGE, FIRE FIGHTING EQUIPMENT TO SPECIALIST DESIGN. POSITIONS SHOWN HERE ARE INDICATIVE OF SCOPE ONLY AND DO NOT PROVIDE THE LIKELY REQUIRED NUMBER, POSITIONING OR TYPE OF ALARM.

FIRE SAFETY/EXIT SIGNAGE TO BE PROVIDED IN COMPLIANCE WITH BS5499.

FIRE DETECTION TO BE PROVIDED IN COMPLIANCE WITH BS5839-1.

DESIGN, INSTALLATION AND TEST CERTIFICATES ARE REQUIRED FOR THE FIRE ALARM AND DETECTION SYSTEM TO DEMONSTRATE COMPLIANCE WITH BS 5839-1: 2013 FIRE DETECTION AND ALARM SYSTEMS FOR BUILDINGS, CODE OF PRACTICE FOR SYSTEM DESIGN, INSTALLATION COMMISSIONING AND MAINTENANCE.

DESIGN, INSTALLATION AND TEST CERTIFICATES ARE REQUIRED FOR THE ESCAPE LIGHTING TO DEMONSTRATE COMPLIANCE WITH BS 5266 – 1:2016 EMERGENCY LIGHTING: CODE OF PRACTICE FOR EMERGENCY LIGHTING OF PREMISES.

DOOR ACCESS CONTROLS SHOULD BE LINKED TO THE FIRE ALARM AND FAIL SAFE IN THE EVENT OF ACTIVATION OF THE ALARM. PLEASE CONFIRM

FINAL DESIGN AND POSITIONING BY CONTRACTOR AND MECHANICAL AND ELECTRICAL CONSULTANT

ALL PARTITION PENETRATIONS, INCL. PIPE AND SOCKET, TO BE FITTED WITH FIRE COLLARS AND BACK BOX PUTTY PAD LININGS, INSTALLED TO MANUFACTURER'S RECOMMENDATIONS

Note: Emergency lighting to be installed in accordance with electrical consultants specification and BS 5266.

AS-BUILT DRAWING

PROJECT: THE MALTINGS
PROJECT ADDRESS: THE MALTINGS, BEAR WHARF, READING, RG1 6BT
CLIENT: MACNIVEN QUAYS LTD
PROJECT NUMBER: 0074

DRAWING NAME: FIRST FLOOR FIRE STRATEGY
ISSUE TYPE: AS BUILT

DRAWING NUMBER: 265-W-55

SCALE: 1 : 50
APPROVED BY: MARENGO PROJECTS

FIRST ISSUE DATE: --
DRAWN BY: KAA

General Notes
Do not scale from drawings. All dimensions must be checked on site and discrepancies verified with the Architect prior to construction. Unless shown otherwise all dimensions are to be to structural surfaces and are in mm.

Unless shown refer to internal door schedule for door sizes.
Door openings to be set out to give full specified architrave either side.
To be read in conjunction with all relevant Architects', Services and Structural Engineers' drawings.

For all structural details and information refer to Structural Engineers drawings.
For all mechanical and electrical information refer to M&E consultants drawings and information unless shown otherwise.

Any discrepancies between drawings to be reported immediately to the architect as once built on site responsibilities are therefore withdrawn. Refer to drawing number for details and correspondence.



13 The Avenue
Ealing
London
W13 8JR
+44 (0) 845 489 0629
hello@marenoprojects.com